

The image shows two technical drawings of square ventilation grilles. The left drawing is for model VB(15/25), showing a square frame with a width of 15 and a height of 25. It features four circular openings, each with a diameter of 20. The right drawing is for model VB(20/30), showing a square frame with a width of 20 and a height of 30. It also features four circular openings, each with a diameter of 20. Both drawings include dimension lines and labels for the frame size and opening diameter.

P(15/20)

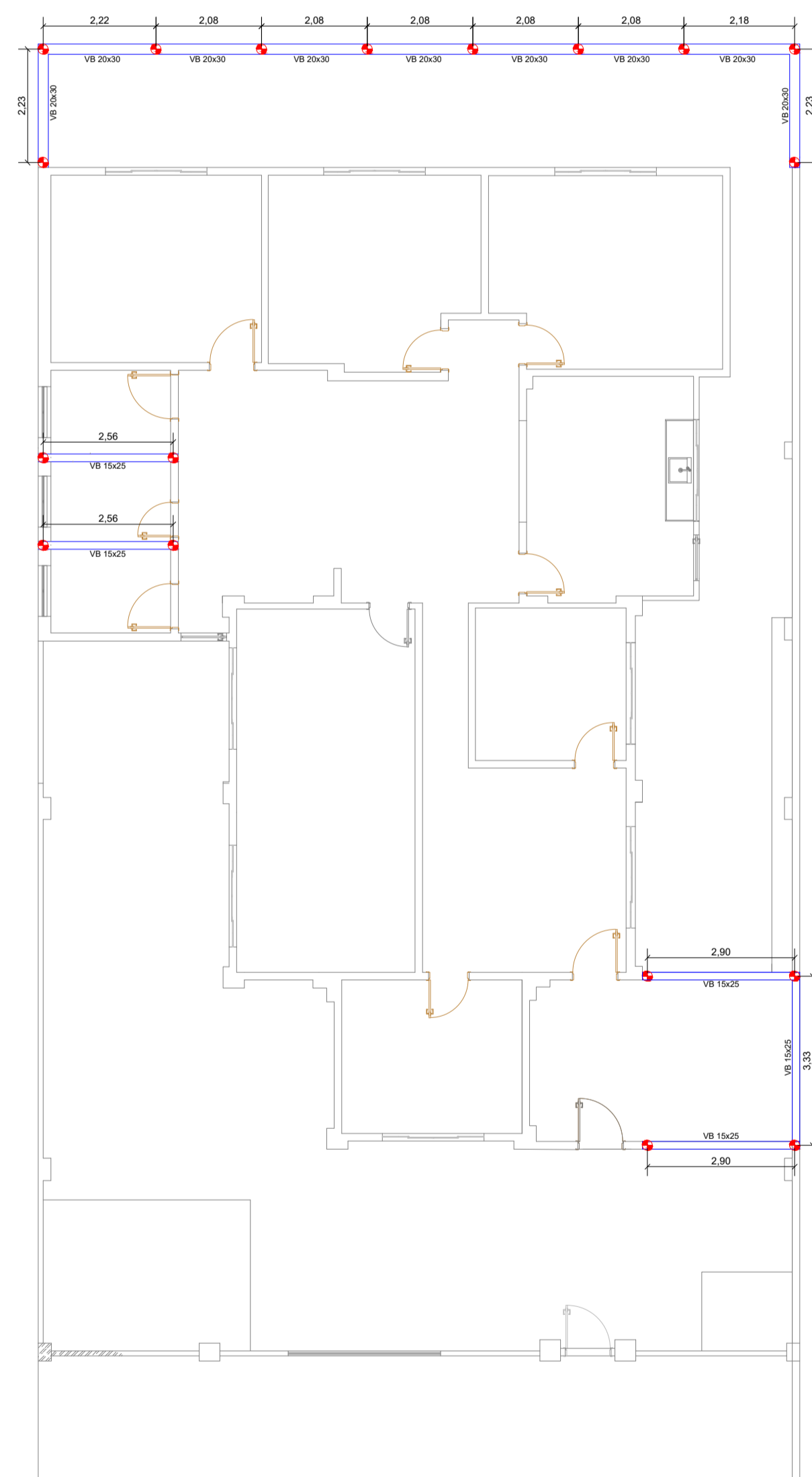
Technical drawing of a square plate with a central square hole. The outer dimensions are 15 inches wide and 20 inches high. The central hole is 15 inches wide and 20 inches high. There are four smaller circular holes, each with a diameter of 405/16 inches, arranged in a square pattern within the central hole. The plate has a thickness of 17/5 inches.

P(20/20)

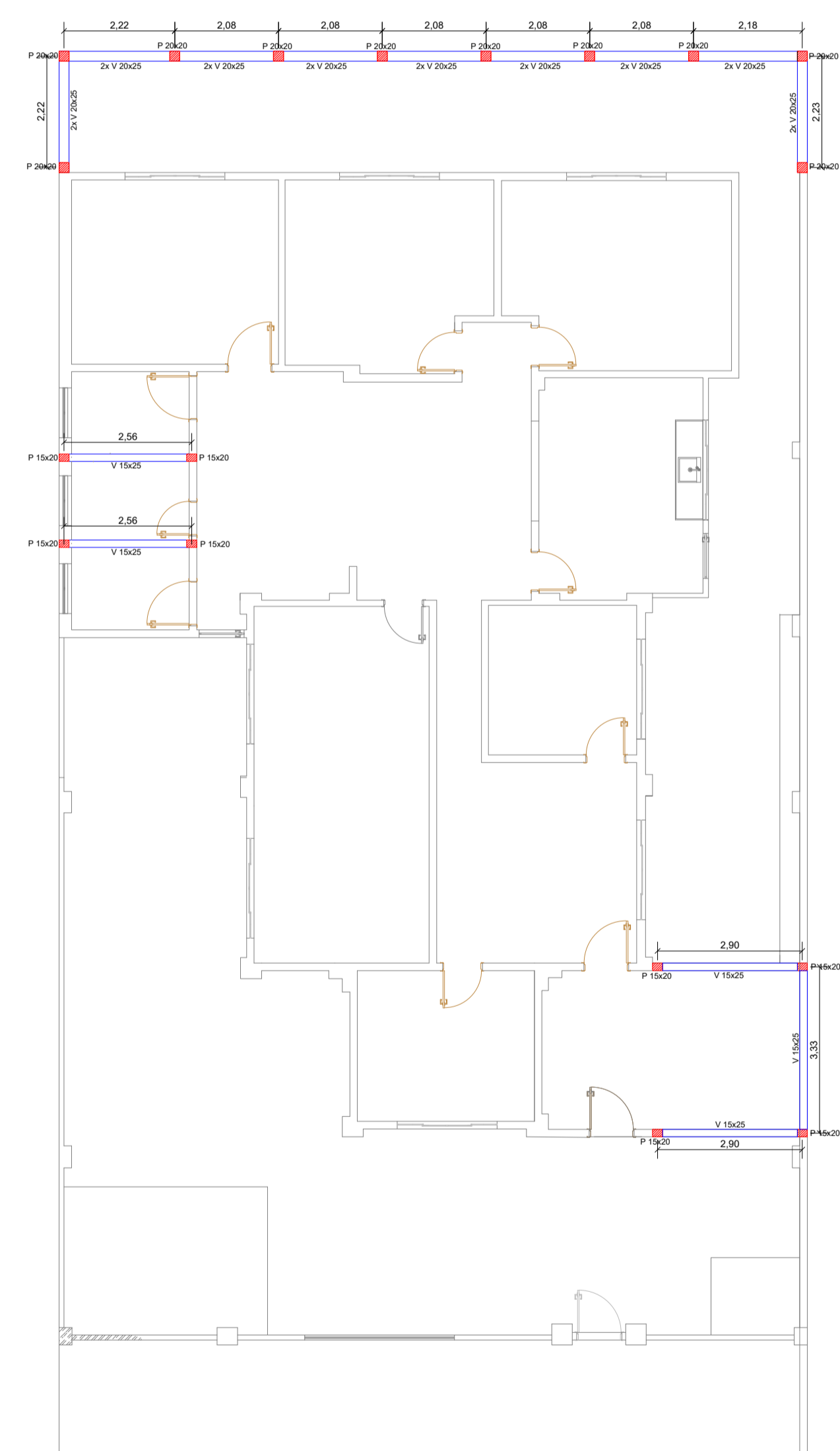
Technical drawing of a square plate with a central square hole. The outer dimensions are 20 inches wide and 20 inches high. The central hole is 20 inches wide and 20 inches high. There are four smaller circular holes, each with a diameter of 403/8 inches, arranged in a square pattern within the central hole. The plate has a thickness of 17/5 inches.

 BROCA DE CONCRETO Ø20 - PROF. 3,00M





PLANTA DE FORMA - FUNDAÇÃO
Escala 1:100



PLANTA DE FORMA - ESTRUTURA
Escala 1:100

PLANTA DE FORMA - FUNDAÇÃO E ESTRUTURA, DETALHAMENTO

FOLHA
02/02

REFORMA DE UM PRÉDIO PÚBLICO

TITOLO DA OBRA E USO

PREFEITURA MUNICIPAL DE PIRATININGA

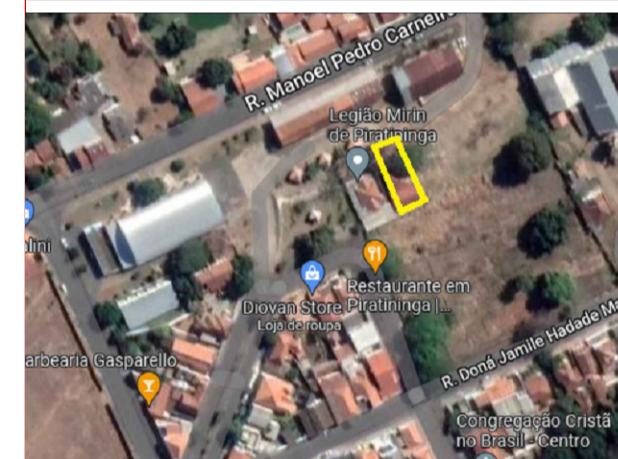
PROPRIETARIO

P.M.B:

LOCAL
PRAÇA DO TURISTA S/Nº

	ZONA DE USO
--	-------------

LOCALIZAÇÃO (SEM ESCALA)



A APROVAÇÃO DESTE PROJETO NÃO IMPLICA NO RECONHECIMENTO, POR PARTE DA PREFEITURA, DO DIREITO DE PROPRIEDADE DO TERRENO, NEM EXIME O PROJETISTA DE SUA RESPONSABILIDADE SOBRE O MESMO.

ÁREAS

TERRENO	387,00m²
ÁREA EXISTENTE	206,75m²

PROPRIETÁRIO
Prefeitura Municipal de Piratininga
CNPJ - 46.137.451/0001-76

RESPONSÁVEL TÉCNICO
ENG.º-CIVIL - OTAVIO CABRAL DA SILVA
CREA/SP- 506.996.698-7

RRT DO PROJETO

RRT DIREÇÃO TÉCNICA